

1

INT. Ground Floor

1/4" = 1'-0"

INTERIOR DESIGN DRAWINGS

PROJECT LOG	DATE

INT. Ground Floor

DETAIL: OPTION .

DRAWN BY:

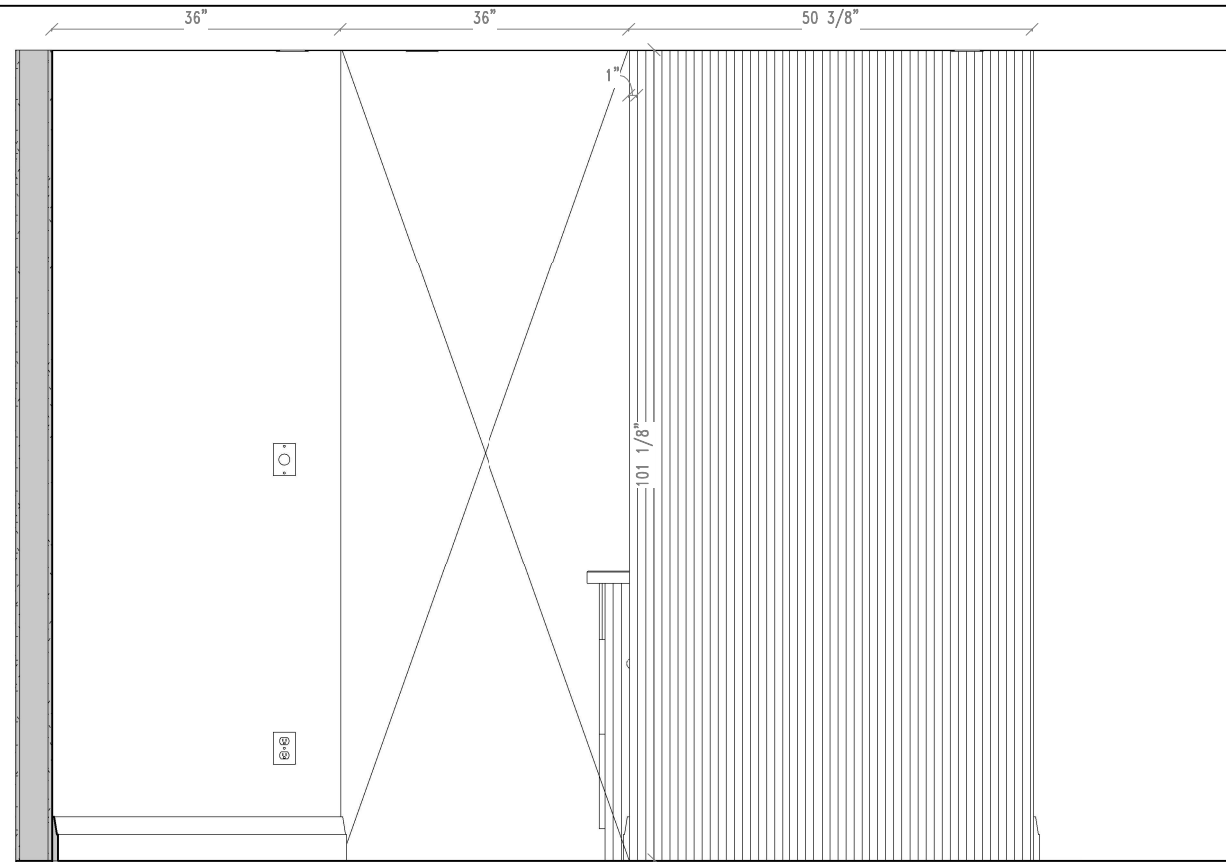
SCALE: 1/4" = 1'-0"

DATE: 06/14/21

I1.1

MILLWORK NOTES [PARTITION WALL WITH APPLIED SLATS]

- WALL COLOUR | AS PER PAINT SCHEDULE
- APPLIED SLATS | STAIN GRADE WHITE OAK
- FINISHING | TO MATCH HARDWOOD FLOORING
- INSTALLED AS PER ELEVATION



1 Dining Room Elevation – North
1/2" = 1'-0"



2 Dining Room Elevation – North Render
1/2" = 1'-0"

INTERIOR DESIGN DRAWINGS

PROJECT LOG	DATE

Dining Room Partition Wall

DETAIL: OPTION .

DRAWN BY: OD

SCALE: 1/2" = 1'-0"

DATE: 06/14/21

ID 1.3.1



1

3D Dining Room Partition Wall

INTERIOR DESIGN DRAWINGS

PROJECT LOG	DATE

3D Dining Room Partition Wall

DETAIL: _____ OPTION .

DRAWN BY: _____ OD

SCALE: _____

DATE: 06/14/21 **ID 1.3.2**



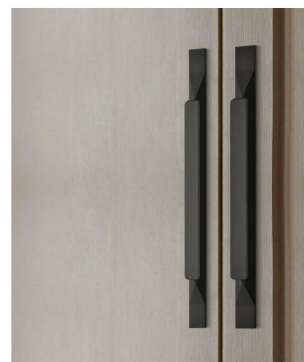
ISLAND PENDANT X3

1 Island Elevation – East

3/4" = 1'-0"

MILLWORK NOTES [ISLAND]

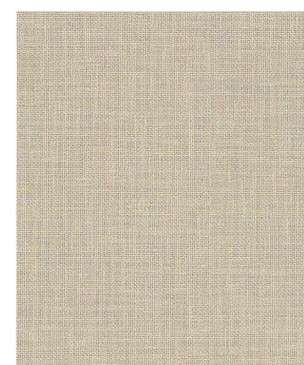
- CABINET BOXES TO BE PARTICAL BOARD CONSTRUCTION
- BLUM SOFT CLOSE DOORS & DRAWERS
- DOOR PROFILE | 5/8" SHAKER
- CABINET FINISH – EXTERIOR | PAINTED, SPACE BLACK 2119-10 MATTE FINISH
- CABINET FINISH – INTERIOR | BEIGE LINEN MELAMINE
- DOOR HARDWARE | SUPPLIED BY MAW. INSTALLED BY MILLWORKER



CABINET HARDWARE



CABINET FINISH EXTERIOR



CABINET FINISH INTERIOR



PERIMETER COUNTERTOP & BACKSPLASH
CAMBRIA HAWKESMOORE, MATTE

INTERIOR DESIGN DRAWINGS

PROJECT LOG	DATE

Island Elevation - East

DETAIL: OPTION .

DRAWN BY: OD

SCALE: 3/4" = 1'-0"

DATE: 06/14/21

ID 1.4.3



1 Island Elevation – West
3/4" = 1'-0"

MILLWORK NOTES [ISLAND]

- CABINET BOXES TO BE PARTICAL BOARD CONSTRUCTION
- BLUM SOFT CLOSE DOORS & DRAWERS
- DOOR PROFILE | 5/8" SHAKER
- CABINET FINISH – EXTERIOR | PAINTED, MATTE FINISH
- CABINET FINISH – INTERIOR | BEIGE LINEN MELAMINE
- DOOR HARDWARE | SUPPLIED BY MAW. INSTALLED BY MILLWORKER



CABINET HARDWARE



PERIMETER COUNTERTOP & BACKSPLASH
CAMBRIA HAWKESMOORE, MATTE



ISLAND PANEL FINISH
BASE – PAINTED, SPACE BLACK 2119-10
APPLIED SLATS – STAIN GRADE WHITE OAK
FINISHED TO MATCH HARDWOOD FLOOR

INTERIOR DESIGN DRAWINGS

PROJECT LOG	DATE

Island Elevation - West

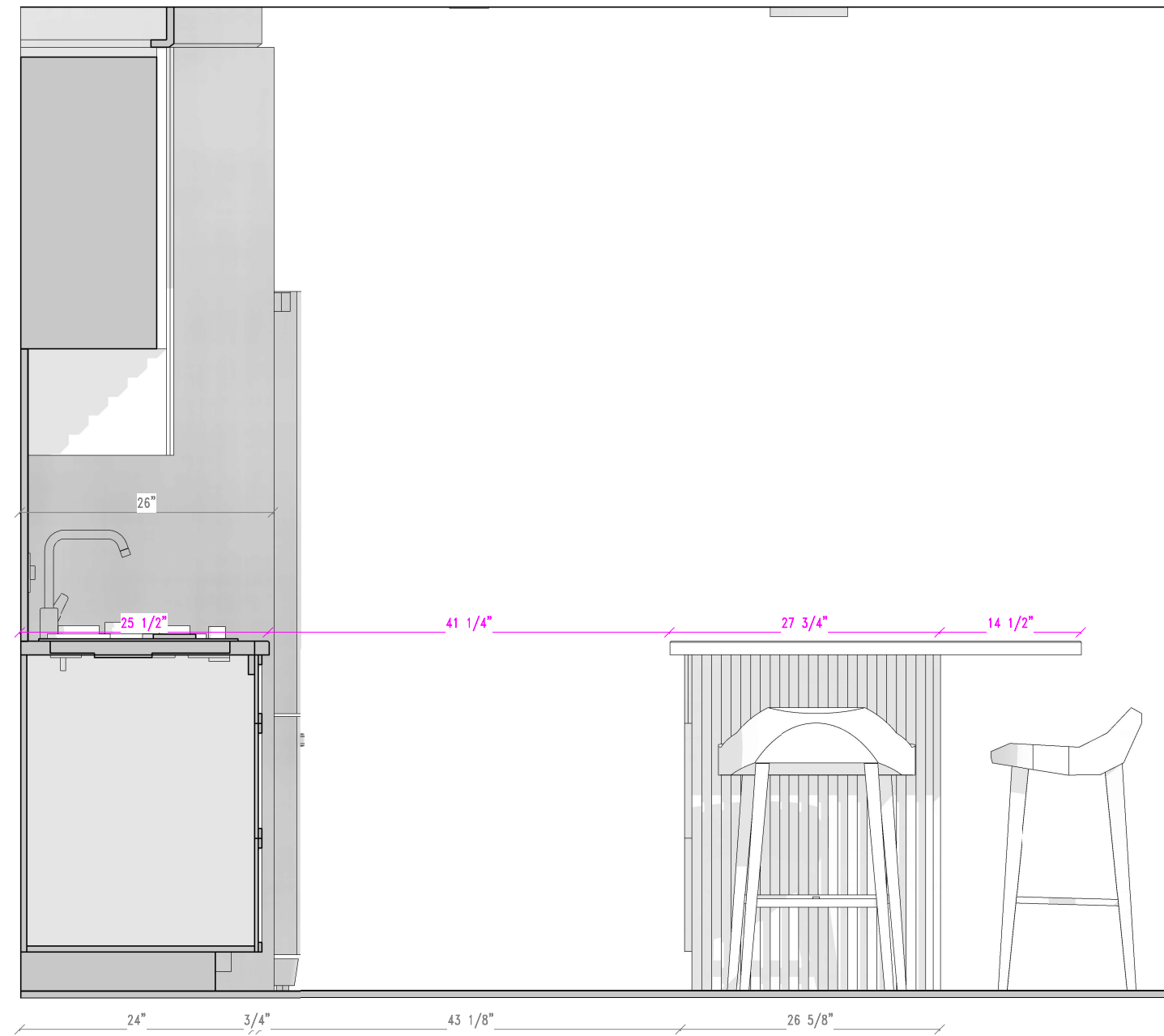
DETAIL: _____ OPTION .

DRAWN BY: _____ OD

SCALE: 3/4" = 1'-0"

DATE: 06/14/21

ID 1.4.4



1 Island Elevation – North
 3/4" = 1'-0"

MILLWORK NOTES [ISLAND]

- CABINET BOXES TO BE PARTICAL BOARD CONSTRUCTION
- BLUM SOFT CLOSE DOORS & DRAWERS
- DOOR PROFILE | 5/8" SHAKER
- CABINET FINISH – EXTERIOR | PAINTED, MATTE FINISH
- CABINET FINISH – INTERIOR | BEIGE LINEN MELAMINE
- DOOR HARDWARE | SUPPLIED BY MAW. INSTALLED BY MILLWORKER



PERIMETER COUNTERTOP & BACKSPLASH
 CAMBRIA HAWKESMOORE, MATTE



ISLAND PANEL FINISH
 BASE – PAINTED, SPACE BLACK 2119-10
 APPLIED SLATS – STAIN GRADE WHITE OAK
 FINISHED TO MATCH HARDWOOD FLOOR

INTERIOR DESIGN DRAWINGS

PROJECT LOG	DATE

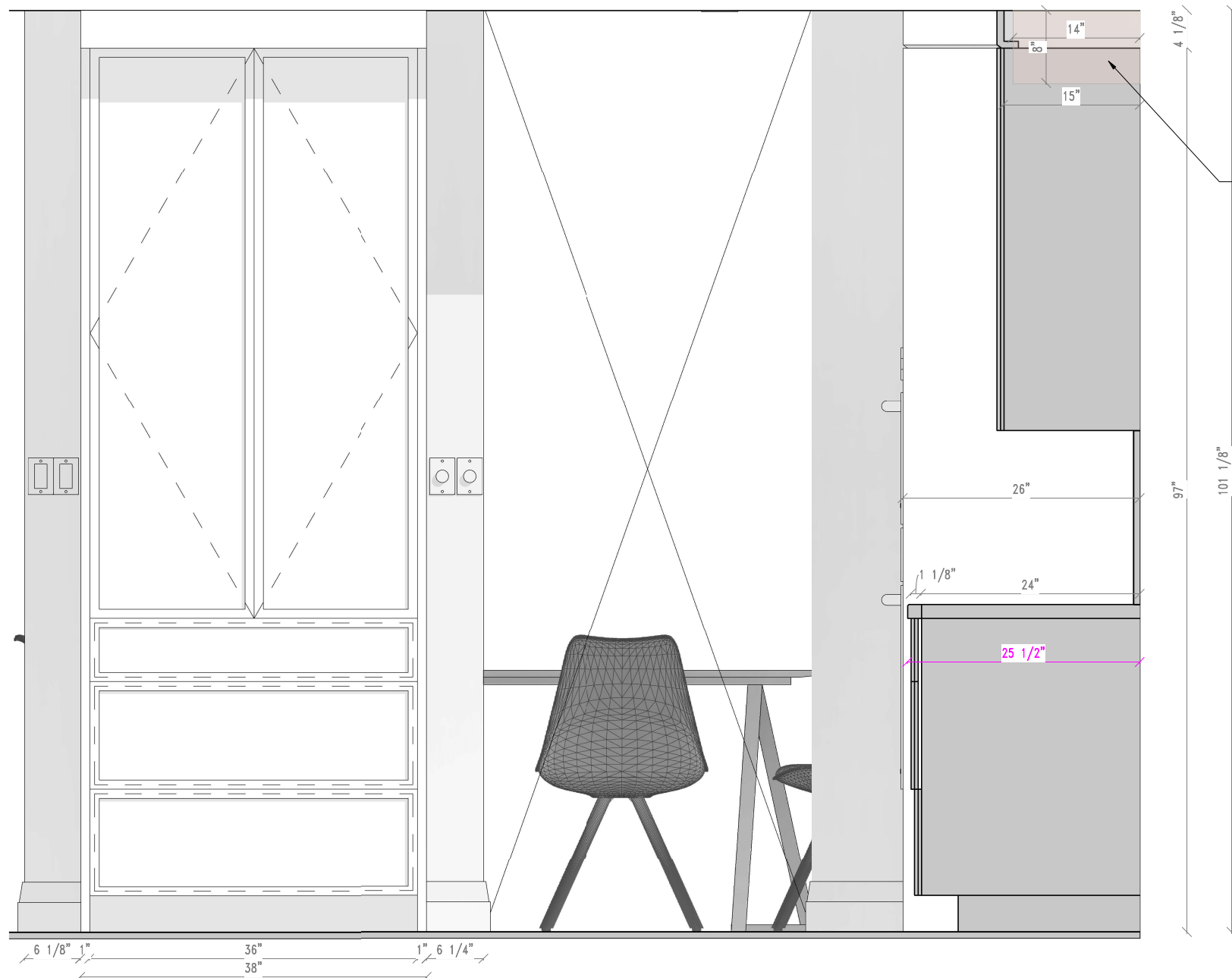
Island Elevation - North

DETAIL: _____ OPTION .

DRAWN BY: _____ Author

SCALE: 3/4" = 1'-0"

DATE: 06/14/21 **ID 1.4.5**



NEW HVAC DUCT APPROX. 8" H X 14" D
 ALL UPPER CABINETS + HOOD COVER 15" D
 CABINET DOOR FRONTS + RISER TO MAINTAIN DIMENSIONS AS SHOWN
 DUCT TO BE CONCEALED BEHIND

1 Pantry Elevation - South
 3/4" = 1'-0"

MILLWORK NOTES [PANTRY]

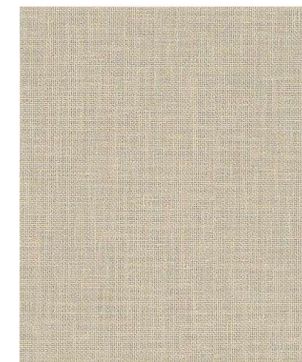
- CABINET BOXES TO BE PARTICAL BOARD CONSTRUCTION
- BLUM SOFT CLOSE DOORS & DRAWERS
- DOOR PROFILE | 5/8" SHAKER
- CABINET FINISH - EXTERIOR | PAINTED, MATTE FINISH
- CABINET FINISH - INTERIOR | BEIGE LINEN MELAMINE
- DOOR HARDWARE | SUPPLIED BY MAW. INSTALLED BY MILLWORKER
- NO CROWN MOULDING. ONLY RISER TO CEILING. FLAT STOCK PROFILE. FINISH TO MATCH CABINET EXTERIOR



CABINET HARDWARE



CABINET FINISH EXTERIOR



CABINET FINISH INTERIOR

INTERIOR DESIGN DRAWINGS

PROJECT LOG	DATE

Pantry Elevation - South

DETAIL: _____ OPTION: _____

DRAWN BY: _____ OD

SCALE: 3/4" = 1'-0"

DATE: 06/14/21 **ID 1.4.6**

